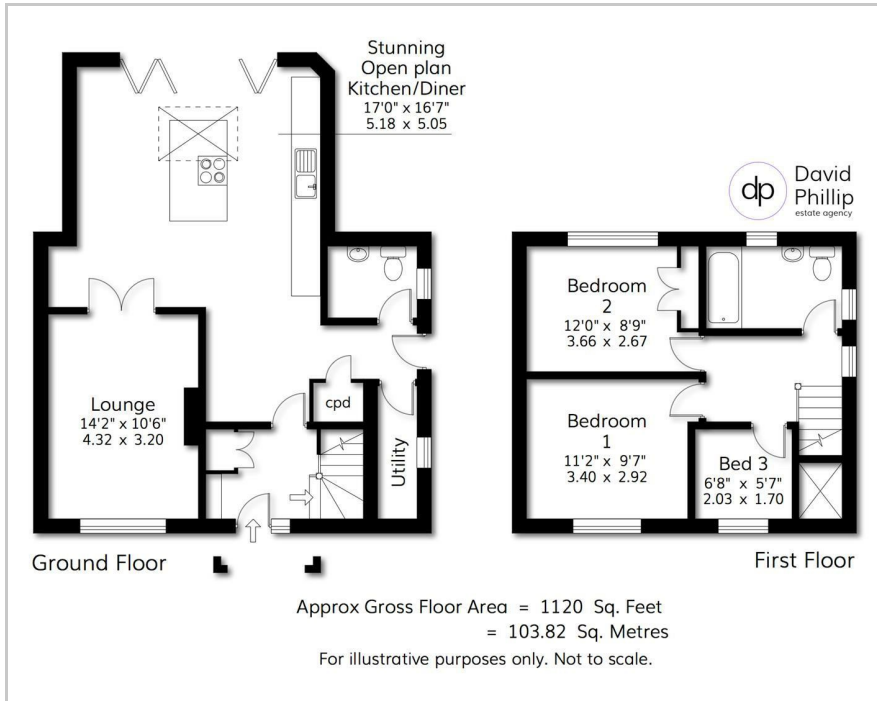




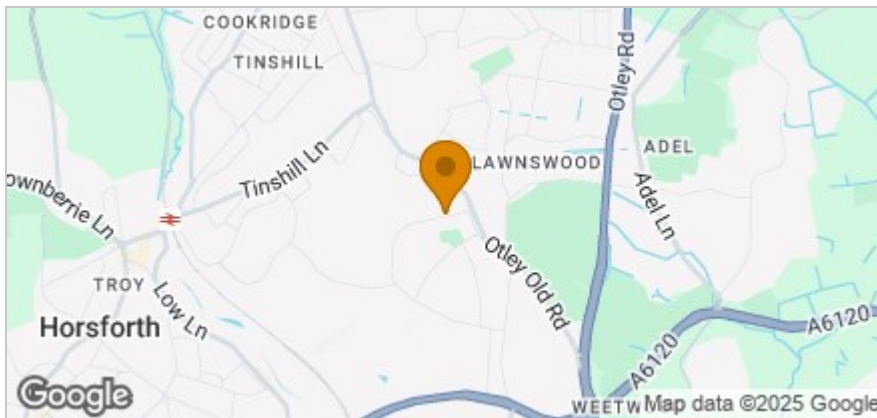
25 Laith Road, Leeds, LS16 6LF
Price Guide £295,000



Floor Plan



Area Map



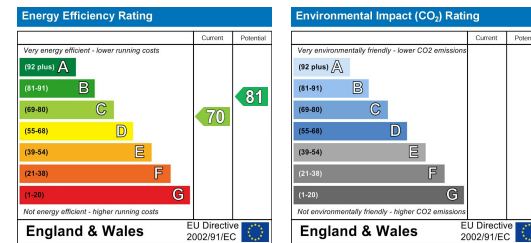
Accommodation

- An Attractively Presented and Extended Semi-Detached House
- Three Bedrooms and a Stunning Living Family Kitchen Diner
- Enclosed Rear Lawned Garden with Patio and Wendy House
- Off-Street Driveway Parking for Two Cars
- Most Sought After Residential Area Close to Amenities
- Livett Cartwright (nonstandard) Construction
- Energy Performance Certificate (EPC) Rating – C
- Freehold, Leeds City Council Tax Band A

Viewing

Please contact our David Phillip Estate Agents Office on 01134 676 400 if you wish to arrange a viewing appointment for this property or require further information.

Energy Efficiency Graph



These particulars, whilst believed to be accurate are set out as a general outline only for guidance and do not constitute any part of an offer or contract. Intending purchasers should not rely on them as statements of representation of fact, but must satisfy themselves by inspection or otherwise as to their accuracy. No person in this firm's employment has the authority to make or give any representation or warranty in respect of the property.